



# China's ageing population and a circular economy: recycling and remanufacturing for growth



**Qian Yu**  
Asian Equity Analyst



**Siguo Chen**  
Asian Equity Portfolio Manager

Published March 2025

## Key takeaways

- China's demographic structure has long been emerging as a source of pain for the country's economy and productivity. Subsequent falling productivity and an inequitable pension allocation structure are creating a perfect storm of downward pressure on GDP growth.
- In an approaching environment of overcapacity and insufficient consumption, recycling and remanufacturing could provide the ongoing support needed in the absence of new growth.
- End-of-life vehicles provide a great example of a source of remanufacturing opportunity for the Chinese economy.

## Ageing population pressures consumption

China's domestic consumption as a percentage of GDP has been lagging the rest of the world, accounting for only 50-60% of national output over the past few decades versus a global average of 70-80%<sup>1</sup>. An over-reliance on investment and exports, alongside income inequality, have been key factors behind China's subdued consumer demand. Falling property prices, sluggish wage growth, and increased geopolitical tensions have also been contributors to this in recent years.

China's rapidly ageing population represents a formidable structural challenge over the coming decades. The country's population began to decline in 2022, mainly due to its low birth rate. Added to this, since 2023, China has experienced a startling increase in the number of people retiring. By 2040, China will have around 500 million retirees, representing about 36% of its population.

**“China's rapidly ageing population represents a formidable structural challenge over the coming decades.”**

<sup>1</sup> NBS, World Bank, Wind & Nomura Global Economics, as at August 2024.

The rural elderly make up 54.7% of all retirees in the country (Figure 1). People in this subset see their income plunge once they are excluded from non-farm job markets; their pension benefits represent only 6.5% of the corporate pensioner segment and just 3.4% of government pensioners (Figure 2).

An abrupt loss of income for so many of those entering retirement is highly detrimental for consumer demand. People who anticipate much lower income after retirement tend to put a greater proportion of their wages towards saving rather than consumption, further dragging on consumer demand, and limiting their contributions to China's growth outlook.

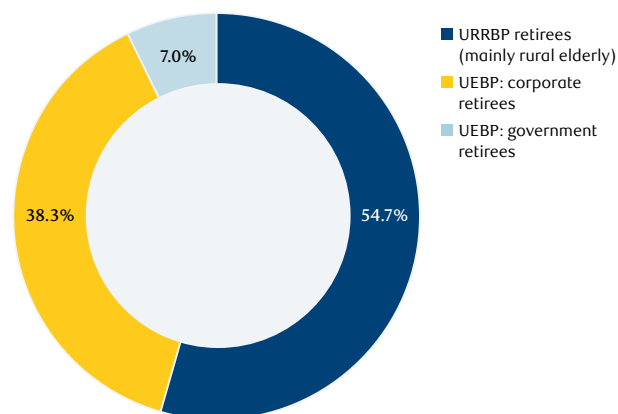
### Focus shifting from 'new growth' to recycling

Historically, Beijing has relied on tax cuts and subsidies to overcome negative demand shocks. However, it is increasingly turning to alternative ways to boost consumer demand as it seeks to navigate the nation's longer-term structural challenges. Initiatives to encourage consumers to replace old products for new ones have become a major policy focus.

In 2024, the government unveiled a programme to boost the trade-in of consumer products, including cars and home appliances. The plan, which should stimulate domestic consumer demand for cars and certain other consumer goods, also aims to further spur the development of the country's circular economy by encouraging recycling and remanufacturing.

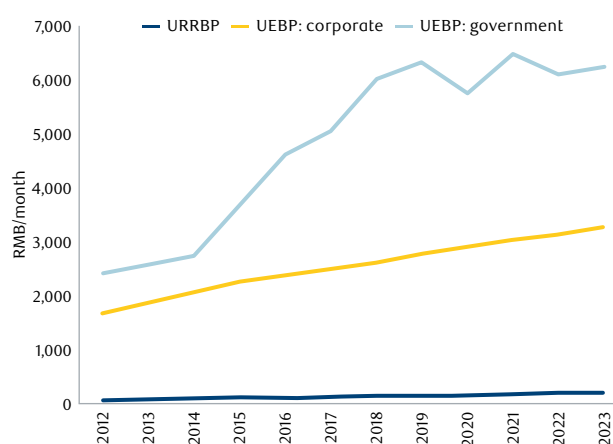
This strategy should create robust conditions for growth in Chinese vehicle recycling and remanufacturing, driven by an increasing number of ELVs as cars bought in the economic boom years are retired, and a rising recycling rate for ELVs.

**Figure 1: The composition of retiree population**



Source: China Labour Statistical Yearbook, Nomura Global Economics.  
Note: the composition is computed based on 2022 data.

**Figure 2: Pension benefits per capita under the basic scheme**



Source: China Labour Statistical Yearbook, Nomura Global Economics.  
Note: the composition is computed based on 2022 data.





## The value chain of automobile recycling

Remanufacturing uses advanced technology to transform recycled auto parts into products that are of equal or better quality than new products. It involves dismantling, cleaning, inspecting, reprocessing/replacement, reassembly, and quality control testing.

The cost of remanufactured auto parts is lower than brand new parts as fewer resources and people are needed to make them. This could go some way to helping alleviate the productivity problem caused by China's ageing population, improving the output efficiency of the available workforce. Remanufactured auto parts are also better for the environment, reducing carbon footprint via the manufacturing process, raw material extraction, and logistics.

## Capturing the ELV remanufacturing opportunities in China

China has by far the largest number of registered automobiles in the world, with approximately 336 million registered vehicles in 2023<sup>2</sup>. In comparison, the US contained 283 million registered cars in 2022<sup>3</sup>. This results in a huge addressable market for ELV recycling in China. Nevertheless, China's ELV remanufacturing industry is still in an early stage of development compared to many developed countries, with North America and Europe currently leading the global remanufacturing aftermarket.

Comparing China's ELV market to Europe underlines the immense growth potential for Chinese auto recycling and remanufacturing. The more mature EU market has around double the ratio of ELVs collected as a percentage of total vehicles versus China<sup>4</sup>. While China is currently focused on boosting the uptake of recycling and remanufacturing domestically, it could increasingly emerge as a serious challenger in the global remanufacturing logistics industry.



## Policy formalisation is driving growth in ELV recycling

In 2019, the Chinese authorities introduced measures to incentivise collection, enabling car owners to sell ELVs at a better price through official dismantling centres. The government also strengthened environmental protection and clamped down on illegal processing. These changes have stimulated the formalisation of China's auto recycling industry, with the number of registered recycling firms rising by around 70% in the three years after the measures were introduced.

## “China’s refocus towards recycling and remanufacturing is creating substantial growth opportunities for Chinese firms operating in the industry.”

ELV recycling has traditionally suffered from high leakage. The China Resource Recycling Association (CRRA) estimates that 35-38% of the country's ELVs are dispatched to certified auto dismantling facilities. However, research by JPMorgan estimates the true figure is closer to 56%. This would mark a substantial improvement compared with estimated collection rates prior to 2000.

## A refocus towards recycling and remanufacturing

A refocus towards recycling and remanufacturing growth makes sense for the auto sector against the backdrop of a rapidly ageing population: growth in Chinese ELVs is set to eclipse new vehicle registrations over the coming years, especially as cars purchased during China's economic boom years are being retired. China's refocus towards recycling and remanufacturing is creating substantial growth opportunities for Chinese firms operating in the industry, and there is significant potential for consolidation, given the number of small firms with less efficient operations.

A pivot towards auto recycling and remanufacturing is also good news for the environment due to carbon footprint reduction in manufacturing, raw materials, and transportation. Whilst there are significant savings due to the lower energy consumption and labour requirements of remanufacturing versus manufacturing, the biggest saving comes from a much-reduced need for raw materials, particularly as recycling and remanufacturing auto parts allows for the recovery and reuse of metals from ELVs.

<sup>2</sup> [gov.cn/archive/statistics/202412/13/content\\_WS675c1240c6d0868f4e8edeca.html](http://gov.cn/archive/statistics/202412/13/content_WS675c1240c6d0868f4e8edeca.html)

<sup>3</sup> [statista.com/statistics/183505/number-of-vehicles-in-the-united-states-since-1990/](https://statista.com/statistics/183505/number-of-vehicles-in-the-united-states-since-1990/)

<sup>4</sup> Based on annual data released by Ministry of Public Security of PRC, Ministry of Commerce of PR, Eurostat, and the Europe Commission.

## Contemporary Amperex Technology Co. Ltd (CATL)

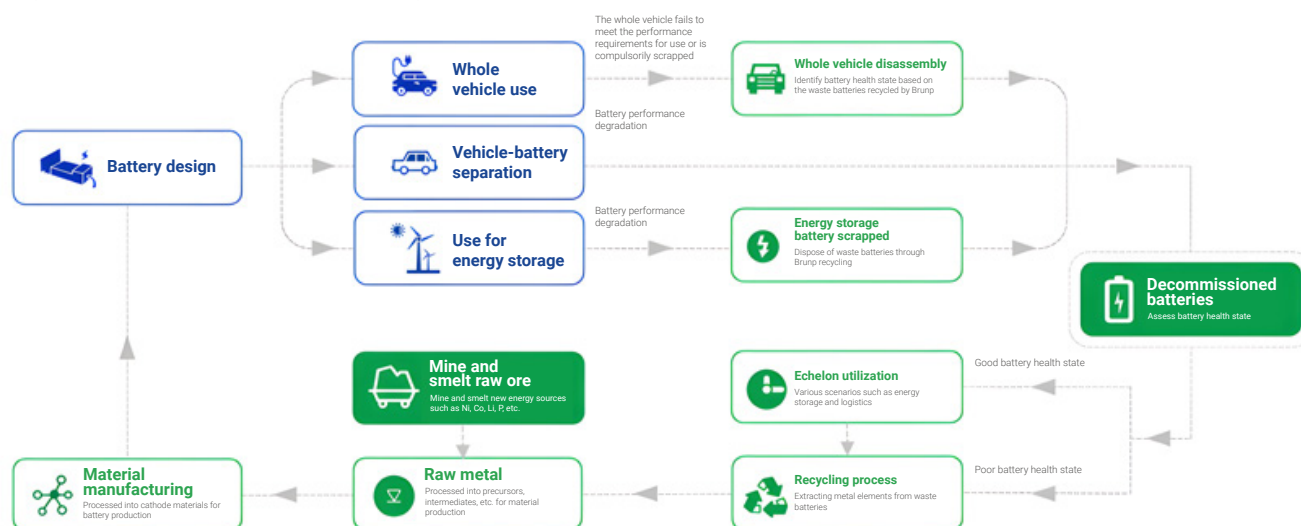
CATL is a Chinese manufacturer of batteries, including those used in electric vehicles (EVs). The firm has manufacturing bases in China, Germany, and Hungary, as well as resource centres in China and Indonesia. Within these resource centres are recycling bases, where materials are reclaimed from waste batteries to be re-constituted for production. The implementation of these centres has allowed CATL (via a subsidiary) to achieve a recovery rate of 99.6% for nickel, cobalt and manganese<sup>5</sup>.

This significant rate of recovery and the leveraging of relationships at different stages of the value chain allows CATL to effectively reduce total carbon emissions throughout the production cycle of its batteries. Sustainable use of materials is key to the effective adoption of EVs and the success of the industry, and the introduction of a recycling value chain helps to alleviate the issues caused by battery production (Figure 3).

That said, the market for the recycling of EV batteries remains very small and thus generates a limited financial impact. In the longer term, the increased use of this service is expected to follow the growth trend of the EV market after a lag period. It is therefore reasonable to suggest that the use of recycled batteries and their constituent materials might see a notable increase over the next few years. With market-leading firms like CATL claiming their stake in this growing trend, we hope to see a broader recognition for the benefits of battery recycling and auto remanufacture, in terms of both the environment and the societies and economies that it supports.

**“The plan aims to spur the development of the country’s circular economy by encouraging recycling and remanufacturing.”**

Figure 3: CATL’s battery recycling value chain



Source: CATL.

### Capturing the opportunity

Beijing has shown through the ongoing formalisation of the remanufacturing industry that it sees worthwhile benefits in supporting its growth, and their view is becoming even more impactful with the number of ELVs set to outstrip the number of new vehicles registered. The gap in process efficacy when compared with Europe shows that the opportunity is there to be taken.

The Asian Equity team is made up of industry and country experts who specialise in bottom-up stock picking with ESG considerations integrated throughout. We see investment opportunities from a long-term, global point of view, and we aim to identify strong businesses that can navigate demographic challenges or disruptive industry changes better than others. We believe that for leading firms such as CATL, ESG is not only about managing risk, but shaping and seizing new growth opportunities. Our own firsthand bottom-up work assesses these opportunities holistically, studying dynamics across the value chain, and gauging how management team works with various stakeholders to win over the long term.

<sup>5</sup> [catl.com/en/news/6201.html](https://catl.com/en/news/6201.html)

## Authors

### Qian Yu

Analyst

---

Qian is an analyst on the RBC Asian Equity team at RBC GAM. In this role, he is responsible for assisting in China equity investment research. Prior to joining the organisation in 2021, Qian was a sell-side equity analyst with a multinational investment bank in Shanghai where he specialised in the China industrials sector. He started his career in the investment industry in 2017.

### Siguo Chen

Portfolio Manager

---

Siguo is a portfolio manager on the Asian Equity team at RBC GAM. She is the lead manager for the team's China strategy and is also the team's healthcare specialist. Prior to joining RBC GAM in 2017, Siguo was a sell-side equity analyst with a multinational investment bank where she specialised in China and Hong Kong consumer sectors and Hong Kong Equity strategy. She started her career in the investment industry in 2012.

**For institutional use only - Not for public distribution.**

This document was prepared by RBC Global Asset Management (UK) Limited (RBC GAM UK), authorised and regulated by the UK Financial Conduct Authority (FCA), registered with the US Securities and Exchange Commission (SEC) and a member of the National Futures Association (NFA) as authorised by the US Commodity Futures Trading Commission (CFTC). In the United States, this document may also be provided by RBC Global Asset Management (U.S.) Inc. ("RBC GAM-US"), a SEC registered investment adviser. The entities noted above are collectively referred to as "RBC BlueBay" within this document. The registrations and memberships noted should not be interpreted as an endorsement or approval of RBC BlueBay by the respective licensing or registering authorities. With respect to the investment performance presented, past performance is not indicative of future performance. Actual account performance may or will vary from the performance shown because of differences in market conditions; client-imposed investment restrictions; the time of client investments and withdrawals; tax considerations; economies of scale; portfolio turnover; the number, type, availability, and diversity of securities that can be purchased at a given time; differences in the underlying currency of the assets in the account, and other factors. Client assets managed using these strategies in separate accounts or different vehicles may be subject to restrictions, fees or expenses that are materially different than those found in the non-US funds.

This document is confidential and, without RBC BlueBay's consent, may not be (i) copied, photocopied or duplicated in any form by any means or (ii) distributed to any person that is not an employee, officer, director or authorized agent of the recipient. Information herein is believed to be reliable but RBC BlueBay does not warrant its completeness or accuracy. This document contains information collected from independent third party sources. For purposes of providing these materials to you, neither RBC BlueBay nor any of its affiliates, subsidiaries, directors, officers, or employees, has independently verified the accuracy or completeness of the third-party information contained herein. The information contained herein does not constitute investment, tax, accounting or legal advice. Recipients are strongly advised to make an independent review with their own advisors and reach their own conclusions regarding the investment merits and risks, legal, credit, tax and accounting aspects of all transactions. Any risk management processes discussed refer to efforts to monitor and manage risk but should not be confused with and do not imply no or low risk. No chart, graph, or other figure provided should be used to determine which strategies to implement or which securities to buy or sell.

Opinions contained herein reflect the judgment and thought leadership of RBC GAM and are subject to change at any time. Such opinions are for informational purposes only and are not intended to be investment or financial advice and should not be relied or acted upon for providing such advice. RBC GAM does not undertake any obligation or responsibility to update such opinions. RBC GAM reserves the right at any time and without notice to change, amend, or cease publication of this information.

**Past performance is not indicative of future results.**

With all investments there is a risk of loss of all or a portion of the amount invested. Where return estimates are shown, these are provided for illustrative purposes only and should not be construed as a prediction of returns; actual returns may be higher or lower than those shown and may vary substantially, especially over shorter time periods. It is not possible to invest directly in an index. Some of the statements contained in this material may be considered forward-looking statements which provide current expectations or forecasts of future results or events. Forward-looking statements are not guarantees of future performance or events and involve risks and uncertainties. Do not place undue reliance on these statements because actual results or events may differ materially from those described in such forward-looking statements as a result of various factors. Before making any investment decisions, we encourage you to consider all relevant factors carefully.

Copyright 2025 © RBC BlueBay. RBC GAM is the asset management division of Royal Bank of Canada (RBC) which includes RBC Global Asset Management Inc. (RBC GAM Inc.), RBC Global Asset Management (U.S.) Inc. (RBC GAM-US), RBC Global Asset Management (UK) Limited (RBC GAM-UK), RBC Global Asset Management (Asia) Limited (RBC GAM-Asia) and RBC Indigo Asset Management Inc. (RBC Indigo), which are separate, but affiliated subsidiaries of RBC.

® / Registered trademark(s) of Royal Bank of Canada and BlueBay Asset Management (Services) Ltd. Used under licence. RBC Global Asset Management (UK) Limited, registered office 100 Bishopsgate, London EC2N 4AA, registered in England and Wales number 03647343.

All rights reserved.

Published March 2025

RE/0228/03/25



**Global Asset  
Management**